

SoftTrace Weighbridge & Intake Management

MEETING THE COMPLEX INTAKE MEASUREMENT & ANALYSIS CHALLENGES
OF MODERN MILK INTAKE OPERATIONS



SoftTrace Weighbridge & Intake Management meets the specific intake measurement, analysis and data integration challenges of the Dairy industry. It allows Dairy manufacturers to record and track all milk, liquid raw materials and dry ingredients received into the manufacturing facility and allocated to the manufacturing process.

Based on our in-depth knowledge of the Dairy industry, SoftTrace have included critical industry-specific intake measurement, control and quality management functionality. We have designed SoftTrace Weighbridge & Intake Management so Dairy manufacturers can custom configure it to meet their specific needs, and cover all aspects of:

- Expected load management
- Intake measurement and analysis
- Process allocation
- Milk assembly
- Silo management
- Product and by-product sales
- Tanker composition
- Mass balance
- Traceability of milk collections from farms and milk loads
- Integrating intake management, tanker and payment systems data

We understand the Dairy industry's milk intake challenges

To meet stringent regulatory and customer demands, today's Dairy manufacturers need to achieve optimal quality data management in raw material intake and process allocation, with an associated focus on efficient data management and traceability. With integrated quality data, SoftTrace provides Dairy manufacturers with an essential level of visibility and control. It creates an unbroken data chain from the raw material source to the plant, on to quality control and release into the appropriate process or holding area.

- Capture data at the intake point / weigh area.
- Track all deliveries and quality control the release of bulk liquid and dry raw materials into storage silos.
- List all delivery loads by date range, product, source / destination, with the associated analysis results.
- Integrate delivery data with collection, intake measurement, quality control and compositional analysis, payment, mass balance, and yield data.
- Reconcile collection volumes against intake / metered volumes.
- Automatically generate quality control records, capture analysis results and maintain stocks of raw materials / ingredients to batch level.
- Manage rejected loads.
- Track a silo batch to the delivery analysis results and source collections.
- Manage direct sales to third party processors with agreed weights and analysis results.
- List all outgoing product dispatches.
- Integrate with process automation software for movement and key events data.
- Integrate with enterprise business software for purchase order management.
- Calculate payments based on agreed figures.



Multiple Weighbridges in Multiple Locations

Use SoftTrace for a single weighbridge in a single location. Or, use it for multiple scales across multiple locations with all transactions automatically transferred to a central SoftTrace Intake Management system. The master data file for products, sources, product groups, drivers, docket design etc. is automatically synchronised to all weighbridges on the network. SoftTrace system security, with login access levels, facilitates local access at each location along with consolidated data access for designated management personnel.

Traceability

Full traceability in a Dairy manufacturing facility requires a data link from raw materials and active ingredients received to the in-process batches.

Data captured at the intake point automatically generates a quality control record in SoftTrace. Raw materials are placed on hold until quality controlled and released into the process. On release, process allocation data is captured in SoftTrace to provide a full quality and compositional profile of bulk raw material inventory.

Real-time integration of SoftTrace Weighbridge and Intake Management with the intake scales, analysis results, inventory records and plant automation system provides a comprehensive profile on all data relevant to raw material receipts and management. It creates an unbroken traceability chain from the farm and active ingredients sources to the plant, on to quality control and release into the appropriate process. It provides full, electronic traceability from raw material receiving to the manufacturing process.

Optimal visibility and control

- **Tanker Load Data Capture:** capture data from milk intake, rapid testing and allocation to silo batches. This creates a full intake and raw materials analysis record.
- **Collection Data:** import farm collection data and link it to the individual tanker load record. This provides traceability from the tanker loads back to the farms.
- **Tanker Load Data Management:** daily reconciliation confirms that all loads have been completed and makes it easy to perform the appropriate adjustments.
- **Tanker Load Agreed Figures:** record volumes and analysis results for loads agreed with third party suppliers.
- **Tanker Load Reports:** a customised suite of collection, intake, analysis, silo allocation, and dispatch reports.

System & Instrument Interfaces

Customisable dynamic data interface and data transfer functionality:

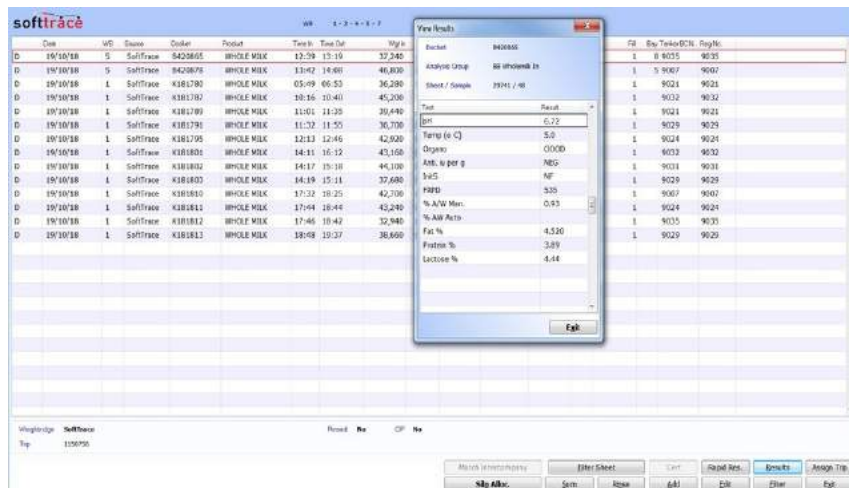
- **Intake Measurement Systems** including Avery, DEM, Riteweigh, Bilenciai, Precia Molen (to name a few).
- **Tanker ADC systems** for milk collection data.
- **Process Automation / MES** for silo allocations, production, CIP and KPI data.
- **Enterprise Resource Planning and Inventory Management** systems to integrate purchase orders, goods inwards, packing, invoicing, stock movements and dispatch data.
- **Analytical Instruments** and systems for automatic transfer of analysis results.
- **Payment Management Systems.**

softtrace
delivering traceability solutions



Intake Measurement

- Capture data from a wide range of scales and intake measurement systems.
- Operate as a manned or unmanned system.
- A range of identification options including key fob, swipe card, vehicle registration, vehicle transponder, RFID tag, barcode, keypad, automatic number plate recognition.
- Customisable interface and touch screen navigation.
- Customisable dockets / tickets.
- Generate laboratory sample barcode labels at the scales.
- Tanker ADC data interface.
- Automatically create a quality system record for tanker load testing.
- Automatically update the Intake Management System for completion on weigh out.
- Capture outgoing measurement and reduce silo stocks.
- Automatically print documentation.
- Generate customised reports.

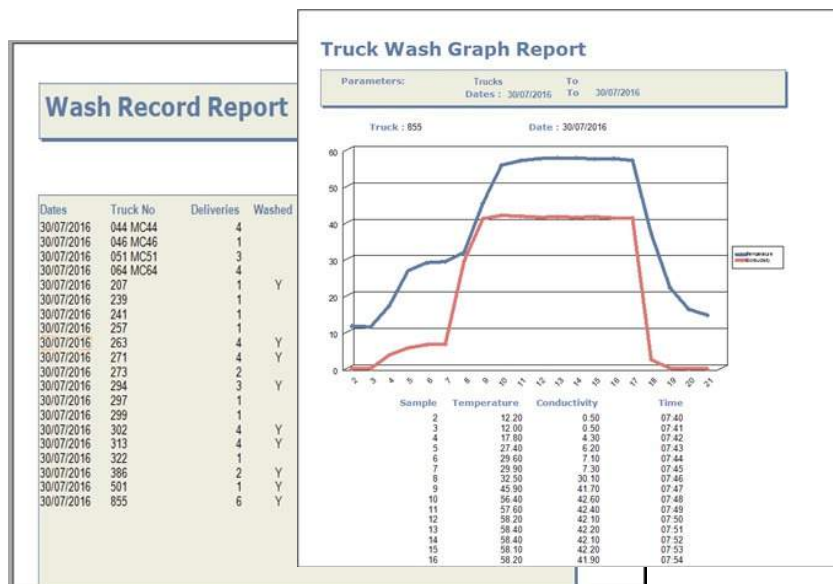


Intake Management & Control

- Integrate collection, silo management, weighbridge, supplier payment, mass balance and yield data.
- Easily access individual tanker load and supplier collection data.
- Achieve full traceability from intake to the manufacturing process.
- Generate all associated quality control and inventory records.
- Maintain stocks of raw materials / ingredients to batch level.
- Achieve efficient load management with full visibility on the status of incoming loads.
- View all tankers and delivery vehicles currently on-site with the corresponding docket no., registration no., tanker id, product description, and release status.
- Segregate loads received by raw material type, source and farm assurance scheme.
- Integrate all deliveries with quality control and compositional analysis results.
- Automatically highlight out-of-specification results, quality control the release of bulk raw materials to storage silos, and manage rejected loads.
- Automatically indicate the availability of bays for intake.
- Integrate with process automation for physical movement and key events data.
- Integrate with enterprise business systems for purchase order management.
- Control / record tanker CIP duration and temperature.
- Manage direct sales to third party processors including agreed weights and analysis results.

Expected Load Management

- Achieve full visibility on loads expected versus loads received.
- Remotely import ADC end of trip data for validation on arrival.
- Integrate imported ADC data with the business system to assign loads to purchase orders.





Security & Compliance

SoftTrace Weighbridge & Intake Management supports Dairy industry users in meeting regulatory and accreditation needs. It conforms with GAMP, ISO 17025, GLP, HOKLAS, EN requirements for audit trails, security via multiple levels of permissions, data integrity, sample ID and tracking, corrective actions, control methodologies, access to SOPs, and data archiving. This includes compliance with CFR 21 Part 11 requirements for integrated security features, electronic records, and signatures.

Expert Support Services

- Technical and business consultancy
- Risk analysis and needs assessment
- Project management and implementation
- Software customisation
- Hardware implementation
- Customised training and on-going technical support

SoftTrace Systems Technology

To meet the technological challenges of today's business environment, the SoftTrace modules have been developed using the latest object oriented, rapid application development (RAD) technology. This facilitates efficient and rapid new product development. This means that we have the ability to easily customise and configure aspects of the SoftTrace modules for new customers, and efficiently provide updates to existing customers. The Client/Server, open systems architecture guarantees:

- High performance
- Superior data management capabilities
- Data access security
- Easy integration with 3rd party systems - ERP, process automation, laboratory instruments etc.
- The adaptability to meet evolving business needs

Designed and tested to meet rigorous Windows standards, SoftTrace provides users with a consistent, intuitive working environment incorporating:

- Windows compliance
- Client / server distributed networking
- Availability on a number of platforms
- Open databases - Oracle, MS-SQL, MySQL etc.

